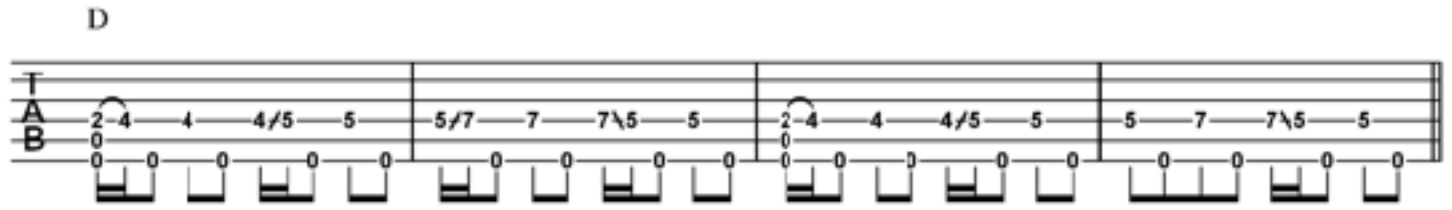


Whiskey and You - Chris Stapleton (Traveller - 2015)



|| **D*** | | | | **Bm7** **Bm9** |
 bottle on the dresser by your ring And it's empty so right now
 | **Bm7** **Bm9** | **D*** | | | |
 I don't feel a thing I'll be hurting when I wake up on the floor But I'll be
 | **Bm** **A** | **G** **C/G** **G** / | **D** **A (hold)** |
 over it by noon That's the difference between whiskey and you
 | **D*** | | | | ||

|| **D*** | | | | **Bm7** **Bm9** |
 morrow, I can walk in any store It ain't a problem, they'll
 | **Bm7** **Bm9** | **D*** | | | |
 always sell me more But your for-giveness Well, that's something I can't buy There ain't a
 | **Bm** **A** | **G** **C/G** **G** / | **D** **A (hold)** |
 thing that I can do That's the difference between whiskey and you
 | **D** | | | | ||
 One's the

A G A
devil, one keeps driving me insane At times I wonder if
G D*
they ain't both the same But one's a liar that helps to hide me from my pain And one's the
Bm A G C/G G / D A (hold)
long gone bitter truth That's the difference between whiskey and you
D* D*
I've got a

|| **D*** | | | | **Bm7** **Bm9** | | | |
 problem but it ain't like what you think I drink because I'm lonesome and I'm
 | **Bm7** **Bm9** | **D*** | | | |
 lonesome 'cause I drink But if I don't break down and bring it on myself It'll
 | **Bm** **A** | **G** **C/G** **G** / | **D** **A (hold)** |
 hit out of the blue That's the difference between whiskey and you
 | **D** | | | | ||
 One's the

A		G		A					
devil,		one keeps driving me insane	At times I wonder		if				
G		D*							
they ain't both the same	But one's a liar	that helps to hide me from my pain	And one's the						
Bm	A	G	C/G	G	/	D	A (hold)		
long	gone bitter truth		That's the difference between whiskey and you						
Bm	A	G	/	D	A	D	/	(end)	
		Ah that's the	difference between whiskey and you						